

General Description

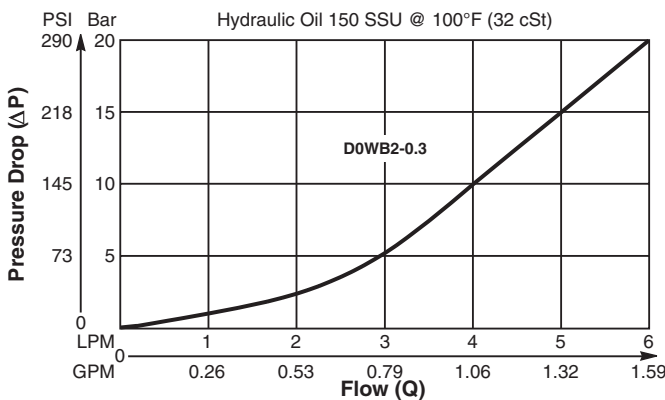
Miniature Ball Type Check Valve.
 For additional information see Technical Tips on pages CV1-CV2.

Features

- Low leakage - less than 3 drops/min.
- Ball type construction for cost effective design
- Extremely compact
- Good contamination tolerance
- All external parts zinc plated

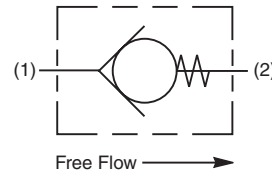
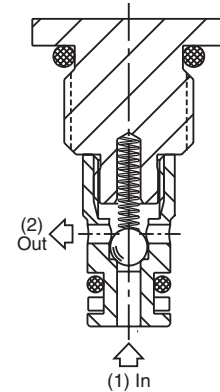
Performance Curve

Pressure Drop vs. Flow (Through cartridge only)

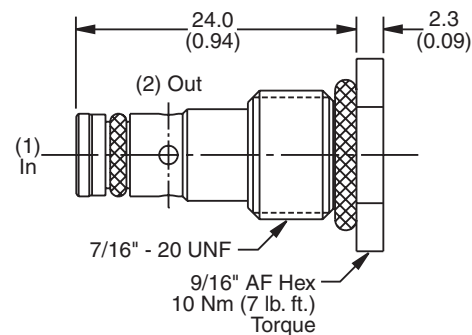


Specifications

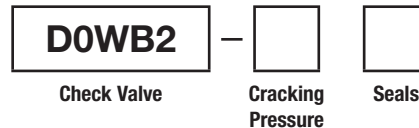
| | |
|--------------------------------|--|
| Rated Flow | 6 LPM (1.6 GPM) |
| Nominal Flow @ 7 Bar (100 PSI) | 3.5 LPM (0.9GPM) |
| Maximum Inlet Pressure | 420 Bar (6000 PSI) |
| Leakage at 150 SSU (32 cSt) | Less than 3 drops/min. |
| Cartridge Material | Steel operating parts hardened steel ball. |
| Operating Temp. Range/Seals | -34°C to +121°C (Nitrile Buna-N) (-30°F to +250°F) -26°C to +204°C (Fluorocarbon) (-15°F to +400°F) |
| Fluid Compatibility/Viscosity | Mineral-based or synthetic with lubricating properties at viscosities of 45 to 2000 SSU (6 to 420 cSt) |
| Filtration | ISO-4406 18/16/13, SAE Class 4 |
| Approx. Weight | 0.012 kg (0.026 lbs.) |
| Cavity | CAV0W-2 (See BC Section for more details) |



Dimensions Millimeters (Inches)



Ordering Information



Highlighted represents preferred options that offer the shortest lead times. Other options may be available, but at extended lead times.

| Code | Cracking Pressure |
|------------|------------------------|
| 0.3 | 0.3 Bar (5 PSI) |
| 1.0 | 1.0 Bar (15 PSI) |

| Code | Seals / Kit No. |
|----------|---------------------------------------|
| N | Nitrile, Buna-N / (SK30519N-1) |

Fluorocarbon seal kits are available separately to convert external seals. If required, please order: **(SK30519V-1)**

Order Bodies Separately See section BC



| Code | Porting / Body Material |
|------|---------------------------------|
| 795S | 1/4" SAE / Steel (5000 PSI) |
| 795A | 1/4" SAE / Aluminium (3000 PSI) |

| |
|----------------------|
| CV |
| Check Valves |
| SH |
| Shuttle Valves |
| LM |
| Load/Motor Controls |
| FC |
| Flow Controls |
| PC |
| Pressure Controls |
| LE |
| Logic Elements |
| DC |
| Directional Controls |
| MV |
| Manual Valves |
| SV |
| Solenoid Valves |
| PV |
| Proportional Valves |
| CE |
| Coils & Electronics |
| CB |
| Cartrpак Bodies |
| BC |
| Bodies & Cavities |
| TD |
| Technical Data |